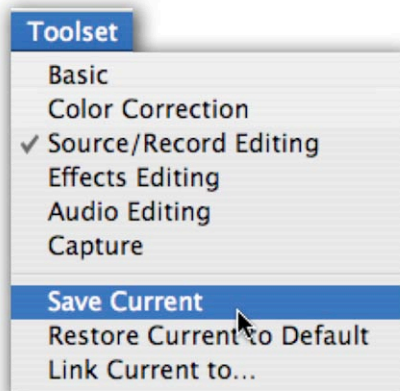


# Avid Xpress Pro & Avid Xpress DV Power Tips

-Richard Harrington, PMP

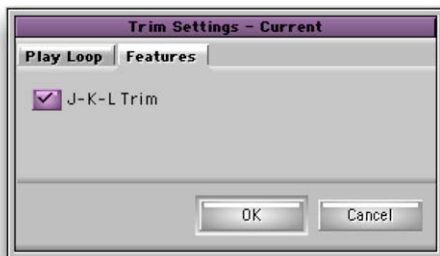


www.rhedpixel.com  
703.560.0220



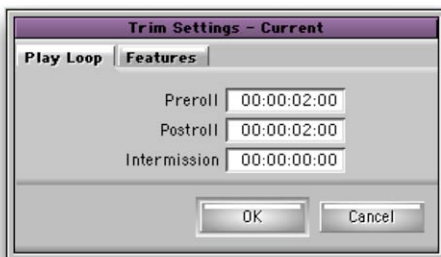
## Toolsets

- Recommended Configurations
- Can be Modified
- Can Be Restored
- BIG Time saver
- Can be mapped to keyboard
- Link Toolsets to Window Settings
  - For Example: Create a Timeline View where the tracks are very tall and Audio Data is made visible.
- Looking for More, try Workspaces



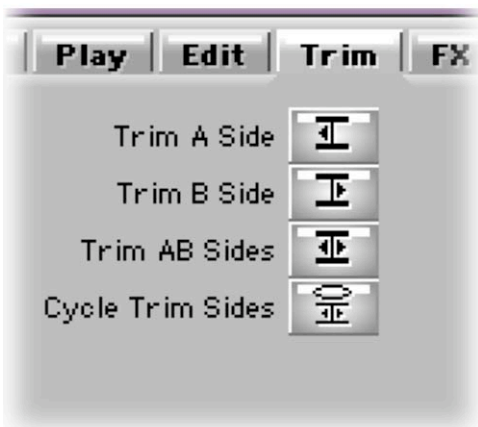
## Nonlinear is key

- Work in a nonlinear fashion
- Build Rough Cut as Fast as Possible
- Avoid Perfection Early On
- Make system transparent
- Power is in trimming



## Trimming

- Ctrl + Lasso in Timeline
- Exit by clicking in TC track
- Enable render on the fly
- Use J-K-L
- Mark In or Out on the fly
- Q and W isolate audio
- Use << < > >> for fine tuning



### Switch What You Trim

- Select which side
- A side = Outgoing
- B side = Incoming
- Centered
- Map to Keyboard
- Click on left, right, or center of trim window

Locators - RHED Pixel			
TC	Track	Comment	
00;00;45;08	V1	Section Two Start	
00;00;45;08	V2	Section Two Start	
00;00;45;08	A1	Section Two Start	
00;00;45;08	A2	Section Two Start	

### Maintaining Sync

- Use Locators
- Add edits
- Option add edit to place on all tracks
- White - identical all elements
- Red - TC match, other differences



### Organize during digitize

- Add in and out on the fly (F1 & F2)
- Add locators F3



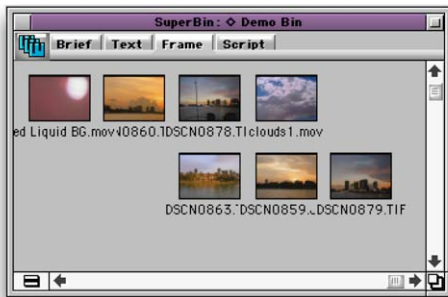
## Automation Gain

- Mix on the Fly
- Mark in to Out region
- Can simplify generated keyframes



## Effects

- Drag to Bin
- Attach media (Option/Alt Drag)
- Use Fade Effects



## Storyboard editing

- Use clip view in bin
- Play clips directly
- Mark IN & OUT
- Organize left to right
- Drag to timeline



## Locators

- Use as in out markers
- Add on the fly
- Use color codes
- Use locator windows



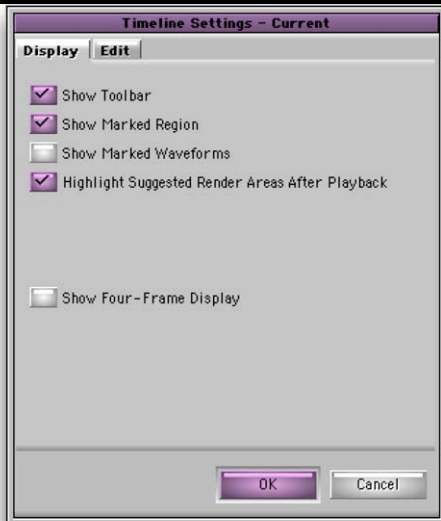
## Editing Titles

- Use option key to adjust kerning
- Tracking controls:  
Space between all letters (called kerning by Avid)
- Leading controls:  
Space between Lines
- Preview titles
- Use Soft Shadows



## Settings - Bin

- Auto Save
- Saved copies
- Inactivity period
- Force Save



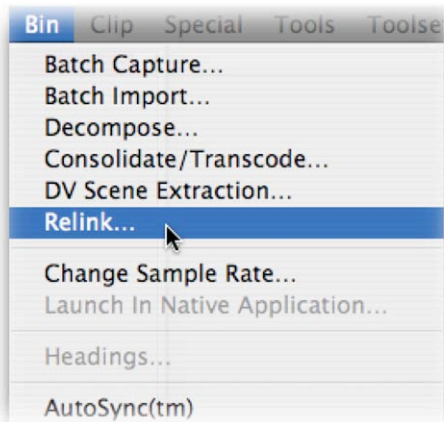
## Settings - Timeline

- Auto Patching
- Monitoring
- Waveforms slow down Performance
- Four Frame useful when trimming clips
- Turn off default Snap



## Keyboard Mapping

- Extract tool
- Play button
- Map Menu Items
- Render Buttons
- Track Activation



## Re-linking

- Based on tape name and timecode
- Use unique tape names
- Project Association
- Master clips re-link only to identical
- Subclip can re-link to longer media
- Sequence easier to re-link
- Cannot re-link to shorter clips



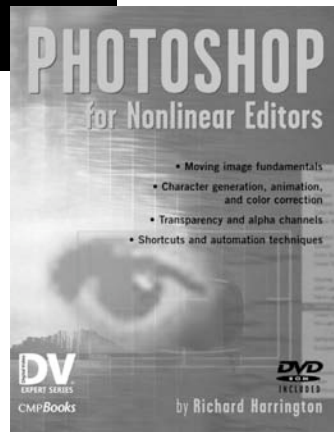
## The Console

- Use with caution
- Select all for total duration
- Leave open to see how big digitized file is



## Maximizing Performance

- RAM is best investment
- Disable render on-the-fly
- Digitize long clips and sub-clip
- Keep bins small
- Delete unneeded media
- Cleanup render files



## Instructor: Richard Harrington

Richard Harrington is a certified Project Management Professional, Adobe Certified Expert in Photoshop and After Effects, and Apple-certified instructor in Final Cut Pro. Additionally, he has completed Avid's Master Editor Workshop and the Avid Certified Instructor Program. His visual communications consultancy, RHED Pixel, creates motion graphics and produces video and multimedia projects. He is a faculty member at The Art Institute of Washington, a popular speaker at conferences, and an instructor for Future Media Concepts. He is the author of Photoshop for Nonlinear Editors and as well as a moderator Creative Cow's Photoshop Forum.

Richard can be reached at <http://www.rhedpixel.com>