

Designing Motion Menus with Final Cut Pro, LiveType and DVD Studio Pro

-Richard Harrington, PMP

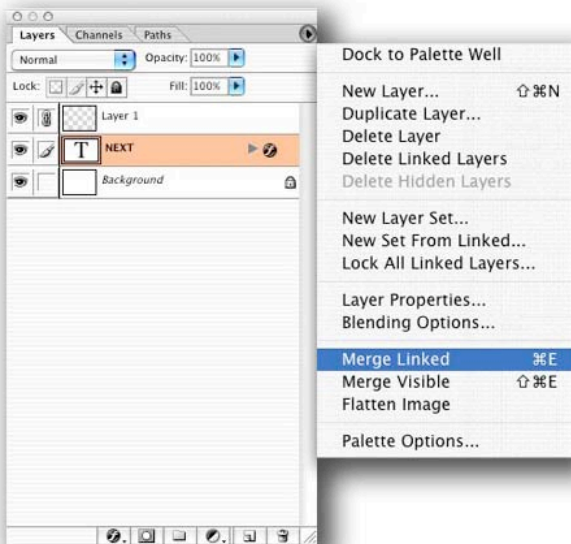


www.rhedpixel.com
703.560.0220

Prepare Movie Assets

It is important to export your movies at the highest quality possible. To harness the full power of the original sequence, choose to export with the native compression rate.

1. Mark an In and Out point in your sequence or on an individual clip.
2. Ensure that ALL media is rendered between the In and Out points.
3. Choose File > Export > QuickTime Movie.
4. Set a destination for your target file. Be sure to select a destination that has adequate space.
5. Be sure to manually add the proper .mov extension to ensure maximum compatibility.



Prepare Photoshop Files

If you have applied layer styles, you must flatten them before input.

1. Select the layer that has the layer style applied.
2. Create a new (empty) layer
3. Link the two layers together
4. Choose Merged > Linked from the Layer's Palette submenu

Other tips

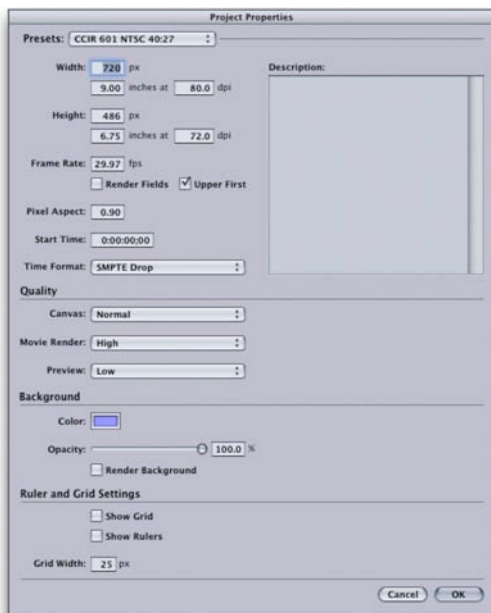
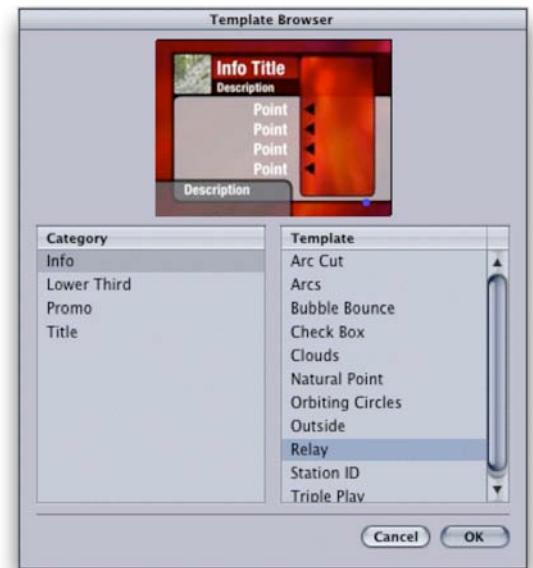
- Blending Modes do not import, merge them.
- Try to minimize the number of layers used, but use separate layers for each button and highlight.

- While LiveType does not support layered PSD files, Photoshop CS provides a nice workaround. Simply save each layer off as a new PSD document and leave the background as a transparency grid visible. Choose File> Scripts> Export Layers to Files and choose the PSD format.

Use LiveType Templates

LiveType contains several templates that will work as DVD menus. That is to say they'll work with a little work on your part.

1. First you need to set up LiveType to match the DVD specification. By default the LiveType standard presets do not match those for DVD (or DV for that matter).
2. Choose Edit > Project Properties and specify a size of 720 X 480.
3. Check the Field Rendering box, but uncheck the Upper Field First Box.
4. Choose File > Open Template (Cmd + Shift + O)
5. Select a template that works for your show.
6. You can modify the templates and substitute your own video tracks or use any of LiveType's built-in elements.



Export Highlight Layer

LiveType does not feature the ability to write out layers. However it can embed alpha channels. This feature will enable you to create the needed highlight layers for a DVD.

1. Complete your DVD menu and render out the final version.
2. Save your File to capture any changes.
3. Then use the File> Save As command to create a new working copy.
4. Delete all layers except for your text and buttons.
5. Some templates have a background color built in. It is necessary to turn this background Off.
6. Choose File > Export Frame (Shift + Cmd + E) and save a PSD file. The resulting

- document will have transparency embedded.
7. Open the file in Photoshop. Fill the button layer with white. It is easiest to lock the transparency layer to do this.
 8. Make a new layer and fill it with black.
 9. Flatten the image.
 10. Save the resulting matte graphic for use in your DVD authoring environment.
 11. For safety, you should also choose to invert the image (Cmd + I) to create an opposite matte; this may come in handy depending upon which DVD authoring software you are using.
-



Instructor: Richard Harrington

Richard Harrington is a certified Project Management Professional, Adobe Certified Expert in Photoshop and After Effects, and Apple-certified instructor in Final Cut Pro. Additionally, he has completed Avid's Master Editor Workshop and the Avid Certified Instructor Program.

His visual communications consultancy, RHED Pixel, creates motion graphics and produces video and multimedia projects. He is a faculty member at The Art Institute of Washington, a popular speaker at conferences, and an instructor for Future Media Concepts.

Richard is the author of *Photoshop for Nonlinear Editors*, and co-author of *Final Cut Pro 4 On the Spot* and *After Effects 6 On the Spot*. If you have more Photoshop questions, Richard is a moderator of Creative Cow's Photoshop Forum.

R H E D

P I X E L

www.rhedpixel.com
703.560.0220